

# POSTAGE RATE ESTIMATE REFERENCE

BASED ON BULK MAILINGS FOR GREENVILLE NC \*rates subject to change

E-DATE  
JAN  
2024

MAILING TYPE	NON-AUTOMATED RATE		ACCULINK AUTOMATED RATE	
<b>FIRST CLASS POST CARD</b>				
Min. Qty: 200 Full Rate Postage Permit Imprint	<b>(FIRST CLASS ONLY)</b>		<b>(FIRST CLASS ONLY)</b>	
500 Presort				
Min. Size: 3.5" x 5"	Presorted: 0.406		5 Digit: 0.357	
Max. Size: 6" x 9"	Single: 0.406		AADC: 0.378	
Thickness: .007-.016"			MXD AADC: 0.390	
<b>FIRST CLASS LETTER</b>				
Min. Qty: 200 Full Rate Postage Permit Imprint	<b>(FIRST CLASS ONLY)</b>		<b>(FIRST CLASS ONLY)</b>	
500 Presort				
Min. Size: 3.5" x 5"	Presorted: 0.553		5 Digit: 0.507	
Max. Size: 6.125" x 11.5"	Single: 0.553		AADC: 0.547	
Weight: 1 oz.	Add'l Ounce 0.24		MXD AADC: 0.571	
Thickness: .007-.25"				
<b>FIRST CLASS FLAT</b>				
Min. Qty: 200 Full Rate Postage Permit Imprint	<b>(FIRST CLASS ONLY)</b>		<b>(FIRST CLASS ONLY)</b>	
500 Presort				
Min. Size: 6.125" x 11.5"	Presorted: 1.30		5 Digit: 0.841	
Max. Size: 12" x 15"	Single:		3 Digit: 1.047	
Weight: 1 oz.	Add'l Ounce 0.24		ADC: 1.108	
Exceeds 1 or more letter dimension			MXD ADC: 1.244	
Thickness: .25-.75"				
<b>STANDARD LETTER Up to 3.5 oz</b>				
Min. Qty: 200 pcs or 50 pounds	AADC: 0.365		5 Digit: 0.336	
Min. Size: 3.5" x 5"	MXD AADC: 0.391		AADC: 0.365	
Max. Size: 6.125" x 11.5"			MXD AADC: 0.385	
Thickness: .007-.25"				
<b>STANDARD FLAT</b>	<b>Up to 4.0 oz</b>	<b>Over 4.0 oz</b>	<b>Up to 4.0 oz</b>	<b>Over 4.0 oz</b>
Min. Qty: 200 pcs or 50 pounds	5 Digit: 0.735	0.735	5 Digit: 0.609	0.639
Min. Size: 6.125" x 11.5"	3 Digit: 0.882	0.882	3 Digit: 0.786	0.816
Max. Size: 12" x 15"	ADC: 0.946	0.946	ADC: 0.893	0.923
Weight: Less than 16 oz.	MXD ADC: 1.037	1.037	MXD ADC: 0.976	0.976
Exceeds 1 or more letter dimension		plus per		plus per
Thickness: .25-.75"		pound 0.901		pound 0.901
<b>NONPROFIT LETTER Up to 3.5 oz</b>				
Min. Qty: 200 pcs or 50 pounds	AADC: 0.208		5 Digit: 0.173	
Min. Size: 3.5" x 5"	MXD AADC: 0.234		AADC: 0.208	
Max. Size: 6.125" x 11.5"			MXD AADC: 0.228	
Thickness: .007-.25"				
<b>NONPROFIT FLAT</b>	<b>Up to 4.0 oz</b>	<b>Over 4.0 oz</b>	<b>Up to 4.0 oz</b>	<b>Over 4.0 oz</b>
Min. Qty: 200 pcs or 50 pounds	5 Digit: 0.496	0.496	5 Digit: 0.40	0.40
Min. Size: 6.125" x 11.5"	3 Digit: 0.643	0.643	3 Digit: 0.577	0.577
Max. Size: 12" x 15"	ADC: 0.707	0.707	ADC: 0.684	0.684
Weight: Less than 16 oz.	MXD ADC: 0.798	0.798	MXD ADC: 0.782	0.782
Exceeds 1 or more letter dimension		plus per		plus per
Thickness: .25-.75"		pound 0.706		pound 0.707

# POSTAGE RATE ESTIMATE REFERENCE

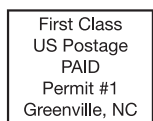
BASED ON BULK MAILINGS FOR GREENVILLE NC \*rates subject to change

E-DATE  
JAN  
2024

MAILING TYPE				ACCULINK AUTOMATED RATE					
<b>OCCUPANT (Letter)</b>				<b>Up to 3.5 oz</b>					
Min. Qty:	200 pcs or 50 pounds	Carrier (none-saturation):		0.229					
Min. Size:	3.5" x 5"	Carrier (none-high density):		0.264					
Max. Size:	6.125" x 11.5"	Carrier (none-basic):		0.547					
Thickness:	.007-.25"								
<b>OCCUPANT (Flat)</b>				<b>Greenville Rate</b>	<b>Up to 4.0 oz</b>	<b>Over 4.0 oz</b>	<b>Outside Greenville Rate</b>	<b>Up to 4.0 oz</b>	<b>Over 4.0 oz</b>
Min. Qty:	200 pcs	Carrier (DDU-saturation):	0.201	0.201	Carrier (none-saturation):	0.305	0.305		
Min. Size:	6.125" x 11.5"	Carrier (DDU-high density):	0.230	0.230	Carrier (none-high density):	0.334	0.334		
Max. Size:	12" x 15"	Carrier (DDU-basic):	0.381	0.381	Carrier (none-basic):	0.485	0.485		
Weight:	Less than 16 oz.			plus per			plus per		
Exceeds 1 or more letter dimension					lb. 0.776			lb. 0.776	
Thickness:	.25-.75"								
<b>OCCUPANT NONPROFIT LETTER</b>				<b>Up to 3.5 oz</b>					
Min. Qty:	200 pcs or 50 pounds	Carrier (none-saturation):		0.147					
Min. Size:	3.5" x 5"	Carrier (none-high density):		0.170					
Max. Size:	6.125" x 11.5"	Carrier (none-basic):		0.396					
Thickness:	.007-.25"								
<b>OCCUPANT NONPROFIT FLAT</b>				<b>Greenville Rate</b>	<b>Up to 4.0 oz</b>	<b>Over 4.0 oz</b>	<b>Outside Greenville Rate</b>	<b>Up to 4.0 oz</b>	<b>Over 4.0 oz</b>
Min. Qty:	200 pcs	Carrier (DDU-saturation):	0.110	0.110	Carrier (none-saturation):	0.214	0.214		
Min. Size:	6.125" x 11.5"	Carrier (DDU-high density):	0.203	0.203	Carrier (none-high density):	0.306	0.306		
Max. Size:	12" x 15"	Carrier (DDU-basic):	0.280	0.280	Carrier (none-basic):	0.384	0.384		
Weight:	Less than 16 oz.			plus per			plus per		
Exceeds 1 or more letter dimension					lb. 0.513			lb. 0.513	
Thickness:	.25-.75"								

## USPS APPROVED PERMIT INDICIA'S

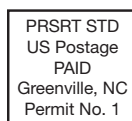
Be sure to comply with these formats and include the proper permit number and city where permit is held.



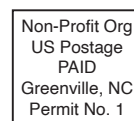
\*FULL RATE  
1ST CLASS  
POSTAGE  
MIN. PIECE 200



PRESORTED  
1ST CLASS  
POSTAGE  
MIN. PIECE 500



PRESORT  
STANDARD  
POSTAGE  
MIN. PIECE 200



STANDARD  
NONPROFIT  
POSTAGE  
MIN. PIECE 200  
*\*must have an approved  
USPS FORM 3623 on File*

1. Presort Standard Flat size mail pieces must have the address in the top half of the piece. If the piece is bound or folded, the address must be in the top half with the bound edge to the right when looking at the address panel.
2. All folded self-mailers **MUST** be on at least 70# paper. Possibly heavier stock will be required if piece weighs over an ounce.
3. All folded self mailers require at least 2 tabs. Possibly more or larger tabs depending on weight.
4. Folded edge for self mailers needs to be on the bottom when looking at address panel. For any other folds contact us at [mailing@acculink.com](mailto:mailing@acculink.com).
5. For any mail jobs that are not a regular job we process, contact us at [mailing@acculink.com](mailto:mailing@acculink.com) to see what would be required to process and mail the job.