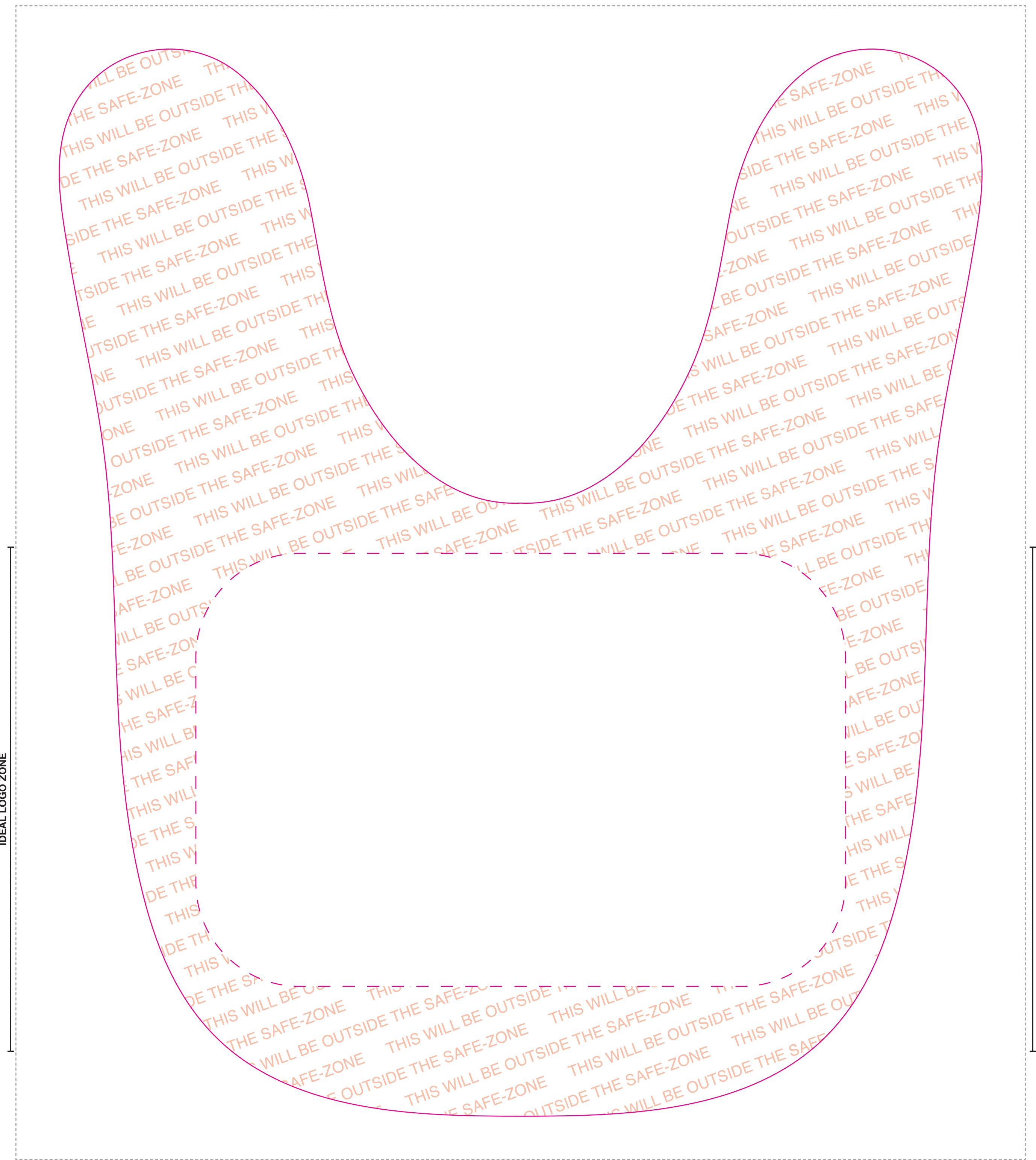
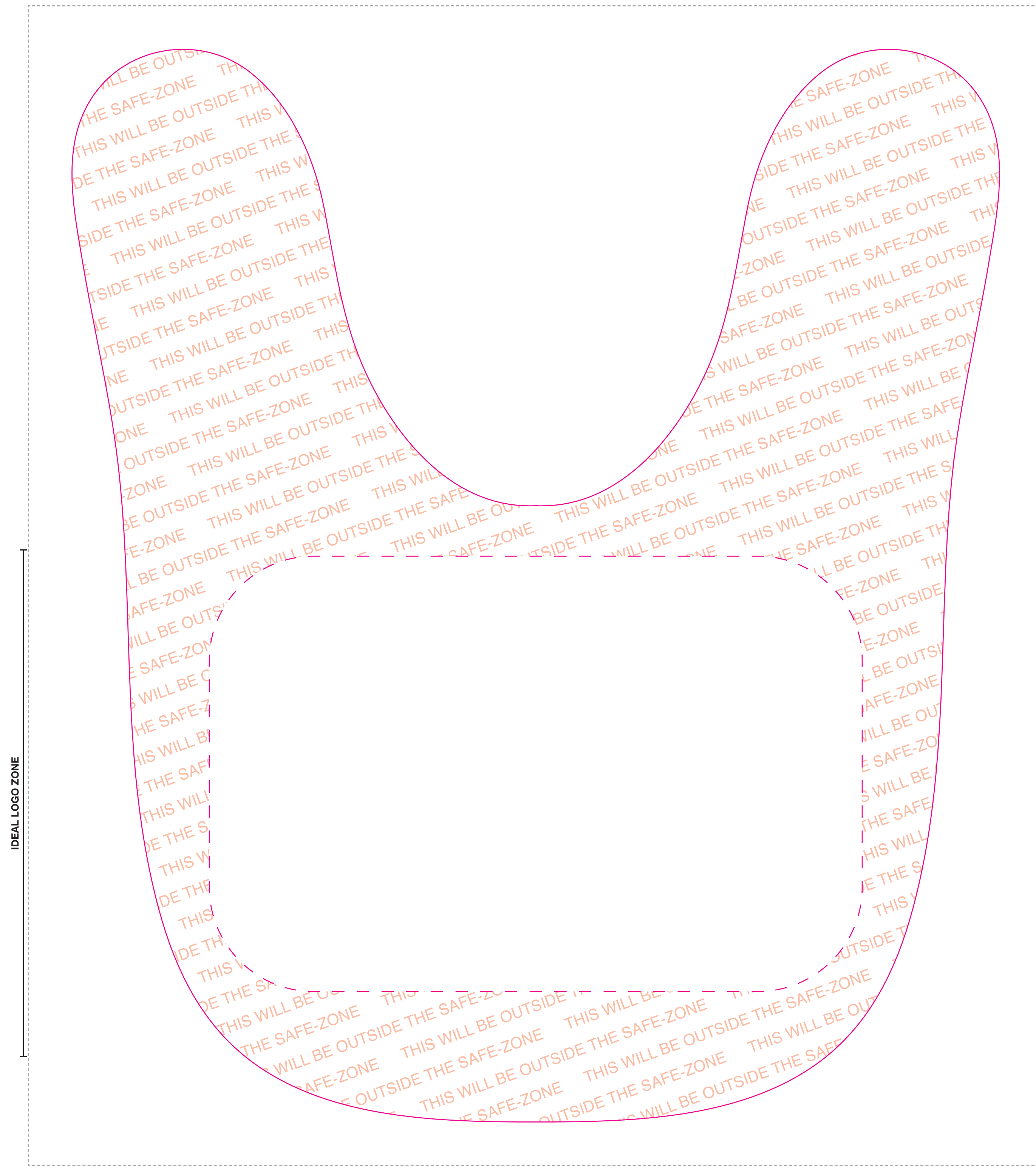


# 2-sided Baby Bib

TRANSFER OVERALL SIZE: 34" X 17.5"  
IMAGE OVERALL AREA: 14" X 16" (2X)

FRONT

BACK



\*\*\* TAPE BACK LABEL \*\*\*

IMAGE POSITION FOR FRONT:  
1.25" FROM THE TOP  
1.5" FROM THE LEFT EDGE  
.25" FROM THE BOTTOM

IMAGE POSITION FOR BACK:  
1.25" FROM THE TOP  
1.5" FROM THE RIGHT EDGE  
.25" FROM THE BOTTOM