

POSTAGE RATE ESTIMATE REFERENCE

BASED ON BULK MAILINGS FOR GREENVILLE NC *rates subject to change

E-DATE
JAN
2021

MAILING TYPE	NON-AUTOMATED RATE		ACCULINK AUTOMATED RATE	
FIRST CLASS POST CARD				
Min. Qty: 200 Full Rate Postage Permit Imprint	(FIRST CLASS ONLY)		(FIRST CLASS ONLY)	
500 Presort				
Min. Size: 3.5" x 5"	Presorted: 0.293		5 Digit: 0.269	
Max. Size: 4.25" x 6"	Single: 0.36		AADC: 0.279	
Thickness: .007-.016"			MXD AADC: 0.285	
FIRST CLASS LETTER				
Min. Qty: 200 Full Rate Postage Permit Imprint	(FIRST CLASS ONLY)		(FIRST CLASS ONLY)	
500 Presort				
Min. Size: 3.5" x 5"	Presorted: 0.46		5 Digit: 0.398	
Max. Size: 6.125" x 11.5"	Single: 0.55		AADC: 0.428	
Weight: 1 oz.	Add'l Ounce 0.20		MXD AADC: 0.45	
Thickness: .007-.25"				
FIRST CLASS FLAT				
Min. Qty: 200 Full Rate Postage Permit Imprint	(FIRST CLASS ONLY)		(FIRST CLASS ONLY)	
500 Presort				
Min. Size: 6.125" x 11.5"	Presorted: 0.87		5 Digit: 0.46	
Max. Size: 12" x 15"	Single: 1.00		3 Digit: 0.618	
Weight: 1 oz.	Add'l Ounce 0.20		ADC: 0.666	
Exceeds 1 or more letter dimension			MXD ADC: 0.774	
Thickness: .25-.75"				
STANDARD LETTER Up to 3.5 oz				
Min. Qty: 200 pcs or 50 pounds	AADC: 0.302		5 Digit: 0.259	
Min. Size: 3.5" x 5"	MXD AADC: 0.311		AADC: 0.285	
Max. Size: 6.125" x 11.5"			MXD AADC: 0.304	
Thickness: .007-.25"				
STANDARD FLAT	Up to 4.0 oz	Over 4.0 oz	Up to 4.0 oz	Over 4.0 oz
Min. Qty: 200 pcs or 50 pounds	5 Digit: 0.538	0.288	5 Digit: 0.45	0.20
Min. Size: 6.125" x 11.5"	3 Digit: 0.64	0.39	3 Digit: 0.588	0.338
Max. Size: 12" x 15"	ADC: 0.691	0.441	ADC: 0.663	0.413
Weight: Less than 16 oz.	MXD ADC: 0.748	0.498	MXD ADC: 0.726	0.476
Exceeds 1 or more letter dimension		plus per		plus per
Thickness: .25-.75"		pound 1.00		pound 1.00
NONPROFIT LETTER Up to 3.5 oz				
Min. Qty: 200 pcs or 50 pounds	AADC: 0.181		5 Digit: 0.138	
Min. Size: 3.5" x 5"	MXD AADC: 0.19		AADC: 0.164	
Max. Size: 6.125" x 11.5"			MXD AADC: 0.183	
Thickness: .007-.25"				
NONPROFIT FLAT	Up to 4.0 oz	Over 4.0 oz	Up to 4.0 oz	Over 4.0 oz
Min. Qty: 200 pcs or 50 pounds	5 Digit: 0.344	0.127	5 Digit: 0.256	0.039
Min. Size: 6.125" x 11.5"	3 Digit: 0.446	0.229	3 Digit: 0.394	0.177
Max. Size: 12" x 15"	ADC: 0.497	0.28	ADC: 0.469	0.252
Weight: Less than 16 oz.	MXD ADC: 0.554	0.337	MXD ADC: 0.532	0.315
Exceeds 1 or more letter dimension		plus per		plus per
Thickness: .25-.75"		pound 0.866		pound 0.866

POSTAGE RATE ESTIMATE REFERENCE

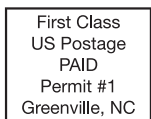
BASED ON BULK MAILINGS FOR GREENVILLE NC *rates subject to change

E-DATE
JAN
2021

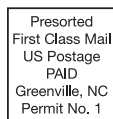
MAILING TYPE				ACCULINK AUTOMATED RATE			
OCCUPANT (Letter)				Up to 3.5 oz			
Min. Qty:	200 pcs or 50 pounds	Carrier (none-saturation):		0.191			
Min. Size:	3.5" x 5"	Carrier (none-high density):		0.219			
Max. Size:	6.125" x 11.5"	Carrier (none-basic):		0.296			
Thickness:	.007-.25"						
OCCUPANT (Flat)		Greenville Rate	Up to 4.0 oz	Over 4.0 oz	Outside Greenville Rate	Up to 4.0 oz	Over 4.0 oz
Min. Qty:	200 pcs	Carrier (DDU-saturation):	0.163	0.072	Carrier (none-saturation):	0.224	0.072
Min. Size:	6.125" x 11.5"	Carrier (DDU-high density):	0.197	0.106	Carrier (none-high density):	0.258	0.106
Max. Size:	12" x 15"	Carrier (DDU-basic):	0.267	0.132	Carrier (none-basic):	0.32	0.132
Weight:	Less than 16 oz.			plus per		plus per	
Exceeds 1 or more letter dimension				lb. 0.365			lb. 0.609
Thickness:	.25-.75"						
OCCUPANT NONPROFIT LETTER				Up to 3.5 oz			
Min. Qty:	200 pcs or 50 pounds	Carrier (none-saturation):		0.111			
Min. Size:	3.5" x 5"	Carrier (none-high density):		0.133			
Max. Size:	6.125" x 11.5"	Carrier (none-basic):		0.21			
Thickness:	.007-.25"						
OCCUPANT NONPROFIT FLAT		Greenville Rate	Up to 4.0 oz	Over 4.0 oz	Outside Greenville Rate	Up to 4.0 oz	Over 4.0 oz
Min. Qty:	200 pcs	Carrier (DDU-saturation):	0.075	0.027	Carrier (none-saturation):	0.136	0.027
Min. Size:	6.125" x 11.5"	Carrier (DDU-high density):	0.107	0.059	Carrier (none-high density):	0.168	0.059
Max. Size:	12" x 15"	Carrier (DDU-basic):	0.177	0.086	Carrier (none-basic):	0.23	0.086
Weight:	Less than 16 oz.			plus per		plus per	
Exceeds 1 or more letter dimension				lb. 0.193			lb. 0.437
Thickness:	.25-.75"						

USPS APPROVED PERMIT INDICIA'S

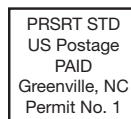
Be sure to comply with these formats and include the proper permit number and city where permit is held.



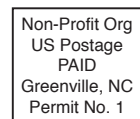
*FULL RATE
1ST CLASS
POSTAGE
MIN. PIECE 200



PRESORTED
1ST CLASS
POSTAGE
MIN. PIECE 500



PRESORT
STANDARD
POSTAGE
MIN. PIECE 200



STANDARD
NONPROFIT
POSTAGE
MIN. PIECE 200
**must have an approved
USPS FORM 3623 on File*

1. Presort Standard Flat size mail pieces must have the address in the top half of the piece. If the piece is bound or folded, the address must be in the top half with the bound edge to the right when looking at the address panel.
2. All folded self-mailers **MUST** be on at least 70# paper. Possibly heavier stock will be required if piece weighs over an ounce.
3. All folded self mailers require at least 2 tabs. Possibly more or larger tabs depending on weight.
4. Folded edge for self mailers needs to be on the bottom when looking at address panel. For any other folds contact us at mailing@acculink.com.
5. For any mail jobs that are not a regular job we process, contact us at mailing@acculink.com to see what would be required to process and mail the job.