

POSTAGE RATE ESTIMATE REFERENCE

BASED ON BULK MAILINGS FOR GREENVILLE NC *rates subject to change

E-DATE
JAN
2019

MAILING TYPE	NON-AUTOMATED RATE		ACCULINK AUTOMATED RATE	
FIRST CLASS POST CARD				
Min. Qty: 200 Full Rate Postage Permit Imprint	(FIRST CLASS ONLY)		(FIRST CLASS ONLY)	
500 Presort				
Min. Size: 3.5" x 5"	Presorted: 0.28		5 Digit: 0.257	
Max. Size: 4.25" x 6"	Single: 0.35		AADC: 0.268	
Thickness: .007-.016"			MXD AADC: 0.274	
FIRST CLASS LETTER				
Min. Qty: 200 Full Rate Postage Permit Imprint	(FIRST CLASS ONLY)		(FIRST CLASS ONLY)	
500 Presort				
Min. Size: 3.5" x 5"	Presorted: 0.459		5 Digit: 0.383	
Max. Size: 6.125" x 11.5"	Single: 0.55		AADC: 0.412	
Weight: 1 oz.	Add'l Ounce 0.15		MXD AADC: 0.428	
Thickness: .007-.25"				
FIRST CLASS FLAT				
Min. Qty: 200 Full Rate Postage Permit Imprint	(FIRST CLASS ONLY)		(FIRST CLASS ONLY)	
500 Presort				
Min. Size: 6.125" x 11.5"	Presorted: 0.799		5 Digit: 0.486	
Max. Size: 12" x 15"	Single: 1.00		3 Digit: 0.605	
Weight: 1 oz.	Add'l Ounce 0.15		ADC: 0.644	
Exceeds 1 or more letter dimension			MXD ADC: 0.727	
Thickness: .25-.75"				
STANDARD LETTER Up to 3.5 oz				
Min. Qty: 200 pcs or 50 pounds	AADC: 0.292		5 Digit: 0.256	
Min. Size: 3.5" x 5"	MXD AADC: 0.302		AADC: 0.281	
Max. Size: 6.125" x 11.5"			MXD AADC: 0.291	
Thickness: .007-.25"				
STANDARD FLAT				
	Up to 4.0 oz	Over 4.0 oz	Up to 4.0 oz	Over 4.0 oz
Min. Qty: 200 pcs or 50 pounds	5 Digit: 0.469	0.242	5 Digit: 0.405	0.178
Min. Size: 6.125" x 11.5"	3 Digit: 0.561	0.334	3 Digit: 0.523	0.296
Max. Size: 12" x 15"	ADC: 0.617	0.39	ADC: 0.597	0.37
Weight: Less than 16 oz.	MXD ADC: 0.652	0.425	MXD ADC: 0.632	0.405
Exceeds 1 or more letter dimension		plus per		plus per
Thickness: .25-.75"		pound 0.907		pound 0.907
NONPROFIT LETTER Up to 3.5 oz				
Min. Qty: 200 pcs or 50 pounds	AADC: 0.174		5 Digit: 0.138	
Min. Size: 3.5" x 5"	MXD AADC: 0.184		AADC: 0.163	
Max. Size: 6.125" x 11.5"			MXD AADC: 0.173	
Thickness: .007-.25"				
NONPROFIT FLAT				
	Up to 4.0 oz	Over 4.0 oz	Up to 4.0 oz	Over 4.0 oz
Min. Qty: 200 pcs or 50 pounds	5 Digit: 0.295	0.101	5 Digit: 0.231	0.037
Min. Size: 6.125" x 11.5"	3 Digit: 0.387	0.193	3 Digit: 0.349	0.155
Max. Size: 12" x 15"	ADC: 0.443	0.249	ADC: 0.423	0.229
Weight: Less than 16 oz.	MXD ADC: 0.478	0.284	MXD ADC: 0.458	0.264
Exceeds 1 or more letter dimension		plus per		plus per
Thickness: .25-.75"		pound 0.775		pound 0.775

POSTAGE RATE ESTIMATE REFERENCE

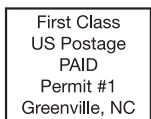
BASED ON BULK MAILINGS FOR GREENVILLE NC *rates subject to change

E-DATE
JAN
2019

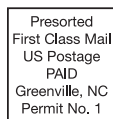
MAILING TYPE				ACCULINK AUTOMATED RATE					
OCCUPANT (Letter)				Up to 3.5 oz					
Min. Qty:	200 pcs or 50 pounds	Carrier (none-saturation):		0.224					
Min. Size:	3.5" x 5"	Carrier (none-high density):		0.25					
Max. Size:	6.125" x 11.5"	Carrier (none-basic):		0.30					
Thickness:	.007-.25"								
OCCUPANT (Flat)				Greenville Rate	Up to 4.0 oz	Over 4.0 oz	Outside Greenville Rate	Up to 4.0 oz	Over 4.0 oz
Min. Qty:	200 pcs	Carrier (DDU-saturation):		0.161	0.072	Carrier (none-saturation):	0.224	0.072	
Min. Size:	6.125" x 11.5"	Carrier (DDU-high density):		0.187	0.098	Carrier (none-high density):	0.25	0.098	
Max. Size:	12" x 15"	Carrier (DDU-basic):		0.253	0.125	Carrier (none-basic):	0.30	0.125	
Weight:	Less than 16 oz.				plus per			plus per	
Exceeds 1 or more letter dimension					lb. 0.511			lb. 0.70	
Thickness:	.25-.75"								
OCCUPANT NONPROFIT LETTER				Up to 3.5 oz					
Min. Qty:	200 pcs or 50 pounds	Carrier (none-saturation):		0.111					
Min. Size:	3.5" x 5"	Carrier (none-high density):		0.124					
Max. Size:	6.125" x 11.5"	Carrier (none-basic):		0.209					
Thickness:	.007-.25"								
OCCUPANT NONPROFIT FLAT				Greenville Rate	Up to 4.0 oz	Over 4.0 oz	Outside Greenville Rate	Up to 4.0 oz	Over 4.0 oz
Min. Qty:	200 pcs	Carrier (DDU-saturation):		0.073	0.027	Carrier (none-saturation):	0.136	0.027	
Min. Size:	6.125" x 11.5"	Carrier (DDU-high density):		0.103	0.057	Carrier (none-high density):	0.166	0.057	
Max. Size:	12" x 15"	Carrier (DDU-basic):		0.169	0.083	Carrier (none-basic):	0.216	0.083	
Weight:	Less than 16 oz.				plus per			plus per	
Exceeds 1 or more letter dimension					lb. 0.341			lb. 0.53	
Thickness:	.25-.75"								

USPS APPROVED PERMIT INDICIA'S

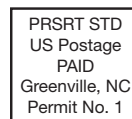
Be sure to comply with these formats and include the proper permit number and city where permit is held.



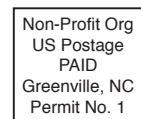
*FULL RATE
1ST CLASS
POSTAGE
MIN. PIECE 200



PRESORTED
1ST CLASS
POSTAGE
MIN. PIECE 500



PRESORT
STANDARD
POSTAGE
MIN. PIECE 200



STANDARD
NONPROFIT
POSTAGE
MIN. PIECE 200
**must have an approved
USPS FORM 3623 on File*

1. Presort Standard Flat size mail pieces must have the address in the top half of the piece. If the piece is bound or folded, the address must be in the top half with the bound edge to the right when looking at the address panel.
2. All folded self-mailers **MUST** be on at least 70# paper. Possibly heavier stock will be required if piece weighs over an ounce.
3. All folded self mailers require at least 2 tabs. Possibly more or larger tabs depending on weight.
4. Folded edge for self mailers needs to be on the bottom when looking at address panel. For any other folds contact us at mailing@acculink.com.
5. For any mail jobs that are not a regular job we process, contact us at mailing@acculink.com to see what would be required to process and mail the job.